

Notice to Mariners

Vessels and General Safety Advice

Scottish Hydro Electric Power Distribution (SHEPD) ED2 Cable Installation Works: Mull-Iona

Date of Issue: 23rd June 2025

Please be advised that Briggs Marine Contractors (on behalf of SHEPD) will be installing a new subsea cable between Mull and Iona. Please refer to Figure 1, that shows the location of the planned works. Please also refer to Table 2 overleaf that lists the coordinates for the area.

Ahead of subsea cable installation operations, shore end teams will utilise 'Red Baroness' (or similar craft) for delivering equipment to Iona.

The cable installation will take place with the Blue Sky and will be assisted with support boats, regularly passing inside the working corridor for crew transfers and supporting nearshore cable landing operations.

Split pipe protection will be installed by divers.

Removal of fishing gear from the Installation Corridor (Figure 1) is requested during the period 21st July-8th August. Contact details for the FLO and FIR are provided at the end of this NtM.

Please refer to Table 1 that lists the scope of work, estimated date range and the relevant vessels that will be utilised. As work progresses, further updates will be provided.

	Estimated date range	Relevant vessels
Equipment landing (Iona)	3 rd July – 9 th July	Red Baroness (or similar)
Cable installation	21 st – 24 th July	Blue Sky, Forth Warrior, Celtic Guardian, Celtic Mara, Celtic Nomad and Celtic Trader
Split pipe protection	25 th July – 8 th August	Forth Warrior

Table 11 - Scope of work, estimated date range and vessels

Legal Notice

Please be advised that this Notice to Mariners should be treated as official notice of the nature, duration and location of the works which are scheduled to take place. During the period of this notice, we request that you plan your activities around our short-term, temporary activities.

Any failure to remove equipment or entry into the identified location in a manner that would constitute a hazard may be a breach of your duties of safe seamanship as described in the Convention on International Regulations for Preventing Collisions at Sea 1972 and/or the Merchant Shipping Act 1995, and may result in removal of the relevant equipment. Failure to remove equipment or entry into the identified location in a manner that would constitute a hazard may constitute a breach of

duty of care at common law, and a failure to protect submarine cables for successful seabed user co-existence under Scotland's National Marine Plan.

SHEPD shall found on this notice in the event of any damage, loss or disruption arising from failure to heed the information herein.

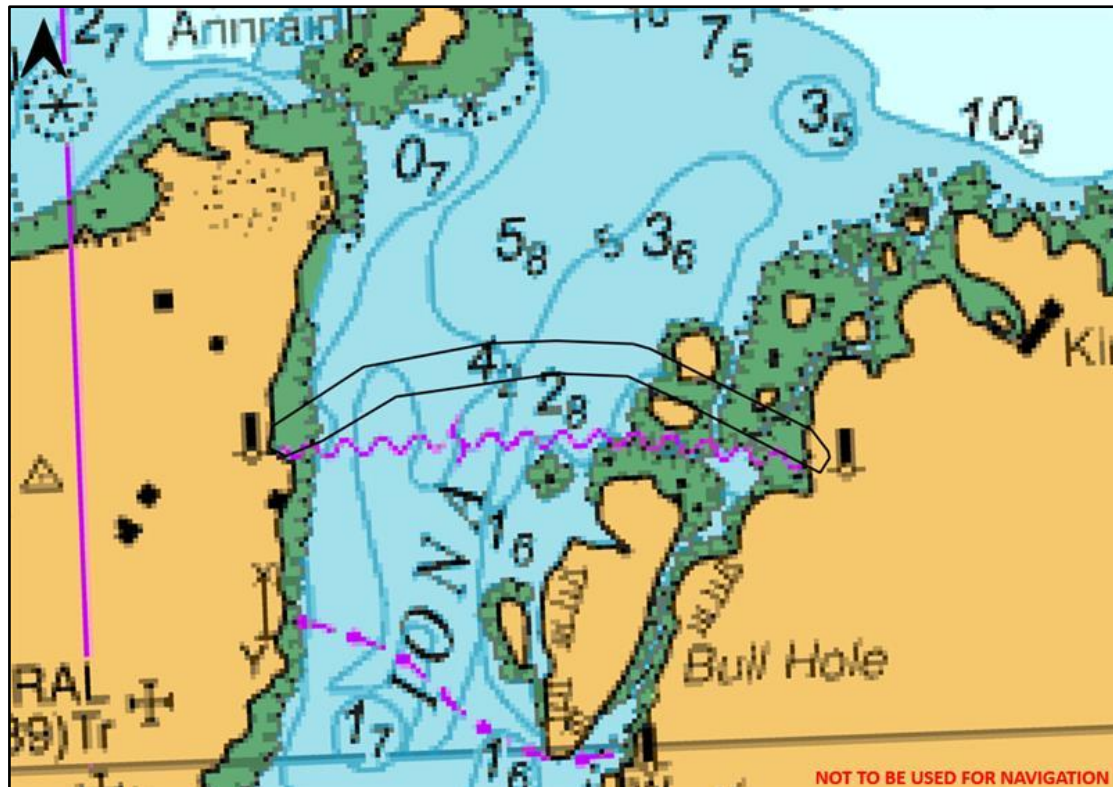





Figure 11 - Admiralty chart showing installation area and installation corridor

Latitude (DDM) WGS84	Longitude (DDM) WGS84
56° 20.503' N	06° 21.515' W
56° 20.467' N	06° 21.469' W
56° 20.456' N	06° 21.465' W
56° 20.432' N	06° 21.495' W
56° 20.543' N	06° 21.848' W
56° 20.563' N	06° 21.913' W
56° 20.603' N	06° 22.054' W
56° 20.612' N	06° 22.264' W
56° 20.584' N	06° 22.742' W
56° 20.516' N	06° 22.966' W
56° 20.493' N	06° 23.076' W
56° 20.507' N	06° 23.123' W
56° 20.542' N	06° 23.115' W
56° 20.635' N	06° 22.836' W
56° 20.666' N	06° 22.461' W
56° 20.666' N	06° 22.261' W
56° 20.656' N	06° 22.035' W
56° 20.647' N	06° 21.985' W

Table 22 – Installation corridor boundary

	<p>Landing Craft</p> <p>Red Baroness</p> <ul style="list-style-type: none"> - 28 m LOA - 7 m beam - 1.6 m Draft <p>MMSI: 235091489 Callsign: 2DFU5</p>
	<p>DSV</p> <p>Forth Warrior</p> <ul style="list-style-type: none"> - 27.27m LOA - 11.5 m beam - 3.8 m Draft <p>MMSI: 235116011 Callsign: 2JHR8</p>
	<p>Cable Lay Vessel</p> <p>Blue Sky</p> <ul style="list-style-type: none"> - 92.36m LOA - 24m beam - 3.5m Draft <p>MMSI: 511100803 Callsign: T8A4015</p>
	<p>Support</p> <p>Celtic Guardian</p> <ul style="list-style-type: none"> - 14m length - 4.3m beam - 0.7m draft




	Support Celtic Trader - 10.3m length - 3.3m beam - 0.5m draft
	Support Celtic Mara - 11m length - 3.4m beam - 0.5m draft
	Support Celtic Nomad -11m length -3.4m beam -0.5m draft

Figure 22 - Vessel Specification

Work Description

During operations the vessels Blue Sky and Forth Constructor vessels will be restricted in their ability to manoeuvre. Whilst operations will seek to minimise disruption on the width of the main navigation channel, some disruption may be unavoidable during operations within the working corridor.

Operations will be conducted over 24 hours and are weather/tide dependent.

Should any vessel wish to come within 500m of the vessels, then direct communication with the Master / Operator is required. Vessels will display the appropriate lights/day shapes for their operations.

Primary Equipment for Cable-Lay Activities

Activity	Equipment	Vessel
Cable lay Activities	Cable lay/ROV/Survey spread	Blue Sky

Contact Details

The contact details are given in the tables below:

Site contact:	
Briggs Marine Contractors Project Manager	Anna Bladon
Email	abladon@briggsmarine.com
Tel	07795 007 512

Fisheries Liaison Officers

Fisheries liaison will be co-ordinated by Brown and May Marine (BMM). For any commercial fishery queries please contact the Company Fisheries Liaison Officer (CFLO's) Alex Winrow-Giffin on 07760 160039, alex@brownmay.com or Meg Kalafat on 07702 710176, meg.kalafat@brownmay.com The local Fishing Industries Representative (FIR) George White (07761 873965), georgewhite0@gmail.com will also be in place to liaise with the vessels and fishing operations in the area.

Further Details

Further enquiries should be addressed to the following people:

Name	Contact Number	Email
Auben Lavery – SSEN Project Manager	07983 513 839	Auben.Lavery@sse.com

Distribution List

Any stakeholders identified within the Argyll Fishing Liaison Management Action Plan (FLMAP), will be included on the distribution list for this NtM.